

DuPont™ Viewpoint™

herbicide

Technical Bulletin

DuPont™ Viewpoint™ herbicide is a developmental product for which an application has not yet been filed with EPA. This developmental product is not registered for use and sale in the United States, and no sale, offer for sale or use of this product may be made unless and until all necessary federal and state registrations have been obtained.

DuPont™ Viewpoint™ herbicide is being developed for broad-spectrum control of tough brush species in power line rights-of-way.

Product Profile (based on DuPont field trials)

- Low use rate
- Broad-spectrum brush control
- Control of difficult species such as ash, box elder, hackberry, maple, mesquite and sweetgum
- Low impact on mammals, wildlife and the environment



BIOLOGICAL ACTIVITY AND USE

General Information

DuPont™ Viewpoint™ herbicide is a dispersible granule that is mixed in water and applied as a spray. Viewpoint™ will be used for general weed and brush control for non-crop applications on private, public and military lands.

In field trials Viewpoint™ provided preemergence and/or postemergence control of broadleaf weed species. For perennial species, a postemergence application will be required for best control.

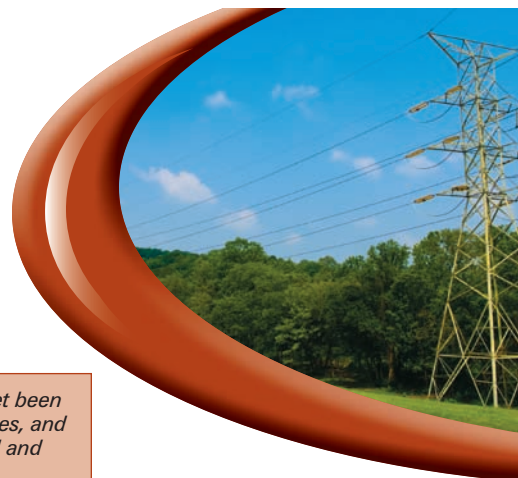
Mode of Action

Viewpoint™ herbicide is being developed by DuPont to control a broad spectrum of broadleaf weeds and brush through two modes of action.

Viewpoint™ combines a new synthetic auxin mode of action with an ALS/AHAS mode of action. Having two modes of action allows better weed management by providing a wider spectrum of brush and broadleaf weed control, including ALS- and glyphosate-resistant weeds.

Use Rate and Biological Activity

Viewpoint™ has been applied in field trials at use rates of 9 to 20 ounces of product per acre. When applied as a spray, Viewpoint™ is absorbed by both roots and foliage of plants, rapidly inhibiting the growth of susceptible weeds. Warm, moist conditions following application accelerate the herbicidal activity of Viewpoint™; cold, dry conditions delay the herbicidal activity. Weeds hardened off by drought or other plant stresses are less susceptible to Viewpoint™.



BRUSH CONTROL SPECTRUM DuPont™ Viewpoint™ herbicide

PARTIAL LISTING

Brush Species

| | |
|--------------|---------------------------------------------------|
| Ash | Locust |
| Black spruce | Maple |
| Box elder | Mesquite |
| Camelthorn | Oaks |
| Cherry | Persimmon |
| Dogwood | Poplar |
| Elm | Sweetgum |
| Hackberry | Tree of heaven (<i>Ailanthus Altissima</i>) |
| Hickory | Vaccinium |
| Huisache | |

Uptake, Absorption and Translocation Characteristics

Viewpoint™ is absorbed by both roots and shoots and translocates throughout the plant in the xylem and phloem. Field trials demonstrated Viewpoint™ is especially active on young, actively growing weeds.



Photo credit: Steven J. Baskauf

Soil Activity and Degradation

Field trials demonstrated that Viewpoint™ is biologically active in soil and can be taken up by plant roots to provide control. It does not stop germination but controls young, actively germinating weeds with uptake through both the roots and shoots. Few other products have this double uptake mechanism, which provides good control under both low rainfall and high rainfall conditions. Viewpoint™ is degraded in soil by microbes, hydrolysis and, to a lesser extent, by photolysis to biologically inactive products. Viewpoint™ will provide longer residual under cool and dry conditions and where soil pH is alkaline. Soil texture and organic matter (OM) have moderate effects on use rates as Viewpoint™ is not bound tightly to either OM or clay.

Plant Selectivity, Sensitivity and Residues

Viewpoint™ herbicide is a developmental product for use in non-crop situations only, and care should be exercised when it is used in the vicinity of crop plants. Exposure to Viewpoint™ may injure or kill most crops.

Toxicity and Metabolism in Animals

Studies have shown that the active ingredients in Viewpoint™ have low toxicity to mammals, birds and insects. These active ingredients are rapidly absorbed and eliminated in warm- and cold-blooded animals and do not bioaccumulate.

RESIDUES IN FOOD — Not Applicable.

For non-crop use only.

DuPont™ Viewpoint™ herbicide is a developmental product for which an application has not yet been filed with EPA. This developmental product is not registered for use and sale in the United States, and no sale, offer for sale or use of this product may be made unless and until all necessary federal and state registrations have been obtained.

The information contained in this document is based on the latest to-date technical information available to DuPont, and DuPont reserves the right to update the information at any time.

The DuPont Oval Logo, DuPont™, The miracles of science™ and Viewpoint™ are trademarks or registered trademarks of DuPont or its affiliates.

*Copyright © 2009 E.I. du Pont de Nemours and Company. All Rights Reserved. 10/09
Reorder No.: K-15194*



The miracles of science™